

VETUS WEATHER INSTRUMENTS (for use at home or in the office)

WS 822L100
(Ø 100 mm)



WS 822L100 ANEMOMETER (WIND SPEED INDICATOR)

WS 822L

This electronic device indicates the wind speed, from 0 to 25 metres/sec., from 0 to 10 Beaufort and from 0 to 50 knots. Operates on both 12 and 24 Volt D.C. Comes complete with sensor unit and 15 metres (50 ft) of cable. Current supply of 110 Volt or 230 Volt A.C. is possible, using an adapter to 12 Volt D.C. with a capacity of at least 0.1 A.

As optional equipment VETUS can supply such adapter for 230 Volt A.C. High-gloss polished brass housing. Dimensions of indicating unit: Ø 100 mm (4") x 70 mm (2.75") high. Diameter of rotor 130 mm (5.12").

WSR160
(Ø 160 mm)

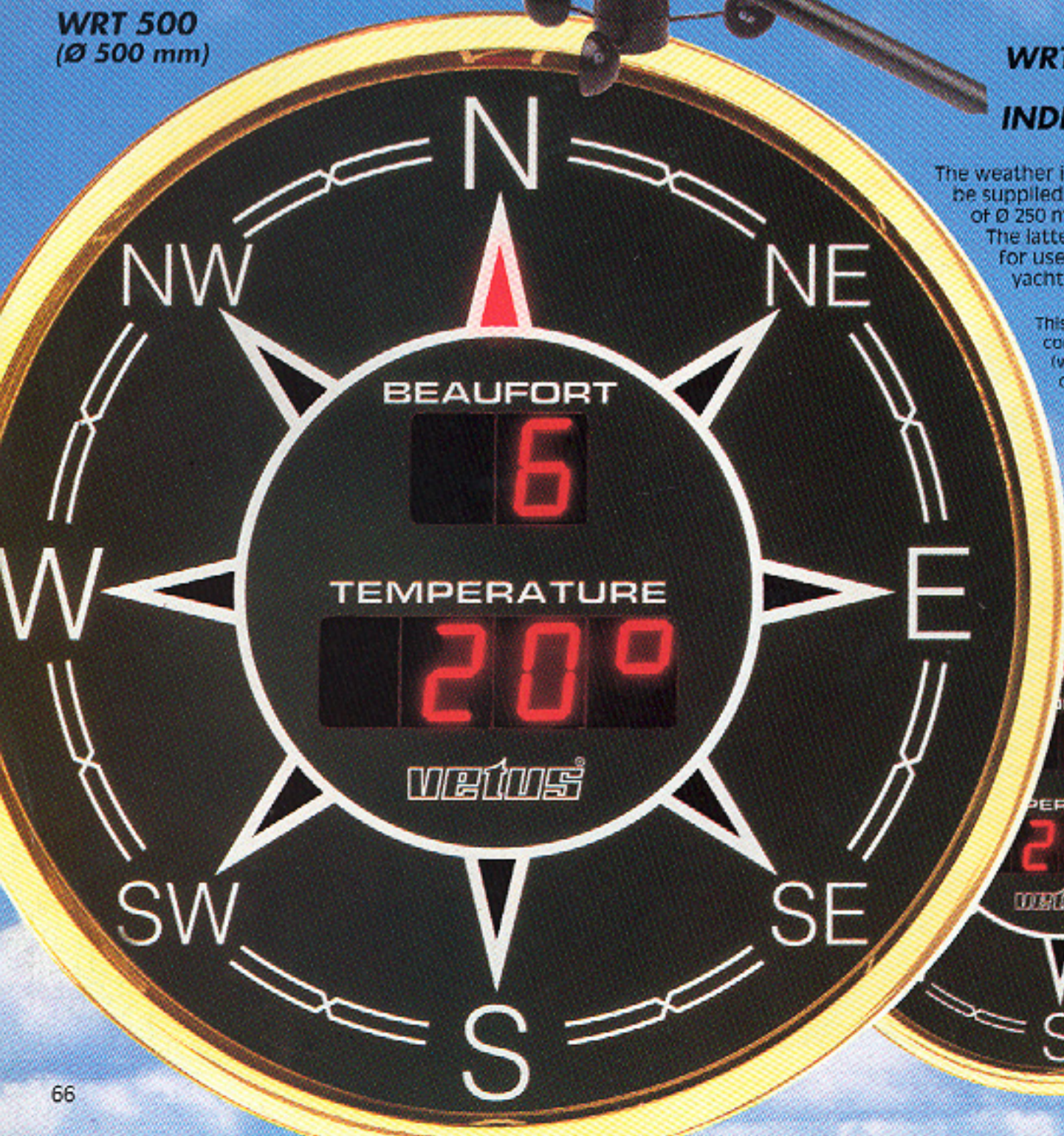
**WIND SPEED/
WIND DIRECTION
INDICATOR WSR 160**

WSR 160

This instrument offers a combination of an anemometer (wind speed indicator) and a wind direction indicator. The wind direction is indicated by LED's. An installation bracket for the sensor, as well as the connection cable to the indicating instrument (50 ft in length) are standard.

Current supply: 12 Volt D.C. Current supply of 110 or 230 Volt A.C. is possible using an adapter to 12 Volt D.C. with a capacity of at least 0.1 A. As optional equipment VETUS can supply such adapter for 230 Volt A.C. Dimensions of indicating unit: Ø 160 mm x 80 mm high (6.3" x 3.16"). High-gloss polished brass housing.

WRT 500
(Ø 500 mm)



**WRT ANEMOMETER/
WIND SPEED
INDICATOR/OUTSIDE
THERMOMETER**

The weather instruments type WRT may be supplied with a housing diameter of Ø 250 mm or Ø 500 mm.

The latter size is excellently suited for use at home or in the office, yacht club etc.

This instrument offers a combination of an anemometer (wind speed indicator), a wind direction indicator and an exterior thermometer. The wind speed (in Beaufort) and the outside temperature (in degrees Centigrade or Fahrenheit) are shown by means of digital read-outs in the centre,

whereas the wind direction is indicated by LED's.

An installation bracket for all sensors, as well as the connection cables to the indicating instrument (15 metres - 50 ft in length) are standard supply. Current supply is 12 Volt D.C. Current supply of 110 or 230 Volt A.C. is possible, using an adapter to 12 Volt D.C. with a capacity of at least 0.75 A. As optional equipment VETUS can supply such adapter for 230 Volt A.C. Dimensions of indicating unit: Ø 250 mm x 55 mm high (Ø 9.85" x 2.17") or Ø 500 mm x 55 mm high. High-gloss polished brass housing.



WRT 250 (Ø 250 mm)



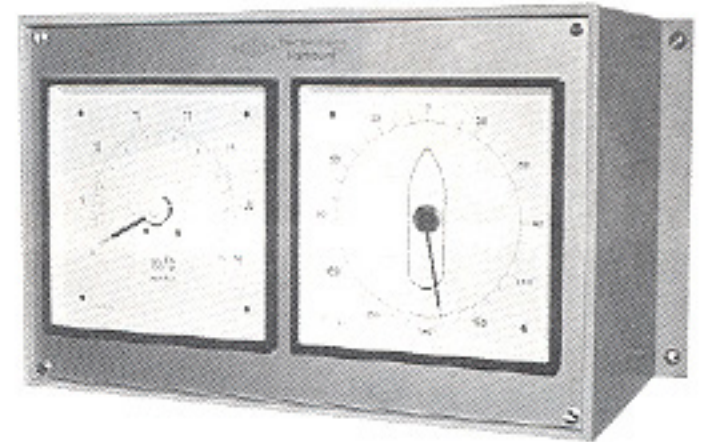
- ← Portable Hand-Use Anemometer "ANEMO"
 Scale 0-120 km/h, 0-12 Beaufort, 0-35 m/s,
 0-66 Kn, transparent cover, weight 325 g
Tragbarer Handwindmesser "ANEMO"
 Skala 0-120 km/h, 0-12 Beaufort, 0-35 m/s,
 0-66 Kn, transparente Schutzhaube, Gewicht 325 g
Art. Nr. 16201

Wooden Box for "ANEMO" (without fig.)
Holzbox für "ANEMO" (o. Abb.)
Art. Nr. 16291

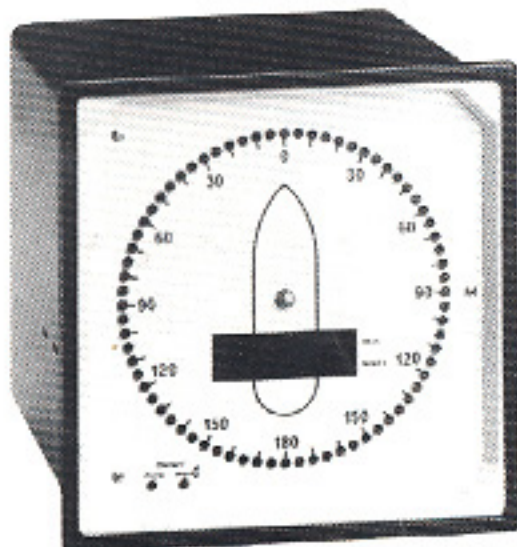
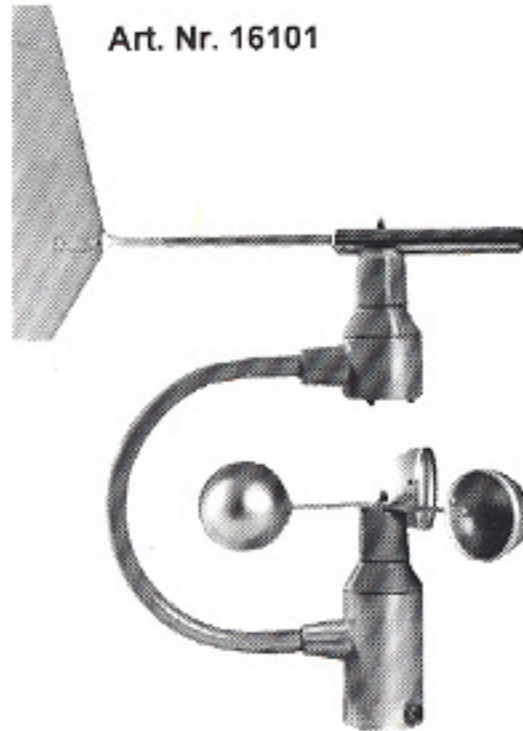
HECHELMANN Analogous Anemometer for Seagoing Ships →
 Combined transmitter for wind velocity and direction, combined
 receiver for velocity and direction, for wall-mounting,
 size: 331 x 211 x 161 mm

Analog-Windmeßanlage für Seeschiffe

*Kombinierter Geber für Windgeschwindigkeit und -richtung,
 kombiniertes Anzeigegerät für Windgeschwindigkeit und -richtung,
 für Wandmontage, Größe: 331 x 211 x 161 mm*



Art. Nr. 16101



- ← HECHELMANN Digital Anemometer for Seagoing Ships
 Combined transmitter for wind velocity and direction,
 combined receiver for wind velocity and direction,
 for desk/panel mounting, size: 192 x 168 x 120 mm
HECHELMANN Digitale Windmeßanlage für Seeschiffe
*Kombinierter Geber für Windgeschwindigkeit und -richtung,
 kombiniertes Anzeigegerät für Windgeschwindigkeit und
 -richtung, für Pulteinbau, Größe: 192 x 168 x 120 mm*
Art. Nr. 16102